

WATERPROOF LVP

# AZALEA LANE

Inspiration in every step.

## Park Collection

SPC Rigid Core Luxury Vinyl Plank  
12 mil Wear Layer  
1.0 mm XPS Attached Pad

**U4500** and **U5000** skus have different spec information



U5000D9120  
**BIG BEND**



U5000D7800  
**BIG SKY**



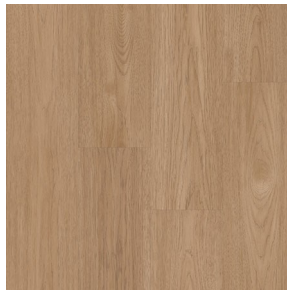
U5000D8850  
**JACKSON HOLE**



U5000D2740  
**JOSHUA TREE**



U5000D2570  
**PISGAH**



U5000D2970  
**SEDONA**



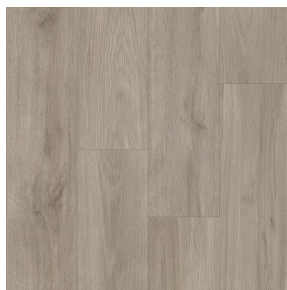
U5000D8280  
**TETON**



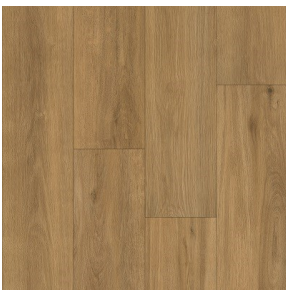
U5000D5330  
**WHITE FISH**



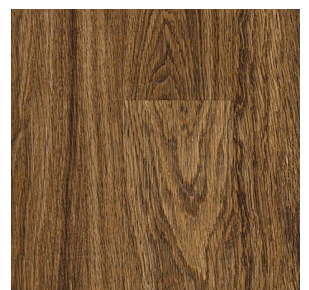
U4500D2340  
**DENALI**



U4500D5460  
**EVERGLADES**



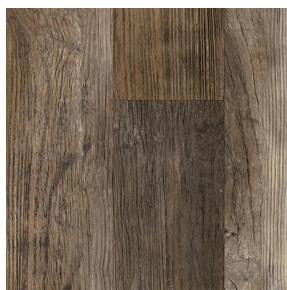
U4500D3430  
**ZION**



U4500D6890  
**SEQUOIA**



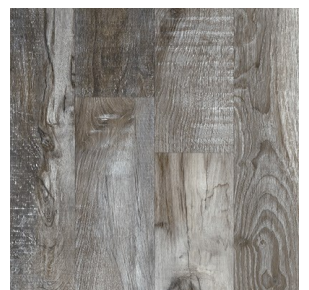
U4500D5880  
**OLYMPIC**



U4500D2760  
**GRAND CANYON**



U4500D2390  
**BISCAYNE**



U4500D1950  
**GLACIER**

W A T E R P R O O F L V P

# AZALEA LANE

Inspiration in every step.

Specs for **U4500** skus

<b>Dimensions</b>	7.7" x 48"
<b>SQ. FT. / Carton</b>	35.89
<b>Wear Layer</b>	12 mil
<b>Construction</b>	Luxury Vinyl Planks with SPC Rigid Core
<b>Core Thickness</b>	3.5 mm
<b>Underlayment Thickness</b>	1.0 mm XPS Attached Pad
<b>Surface Finish</b>	Overall Embossing with Enhanced Ceramic Bead Finish
<b>Joint Profile</b>	Micro Bevels
<b>Installation Method</b>	Glueless Floating; i4F drop-lock system
<b>Installation Level</b>	All Levels
<b>Installation Category</b>	Residential, Multi-Family
<b>IIC Sound Rating</b>	57
<b>Warranties</b>	20 Year Residential

## Features & Benefits

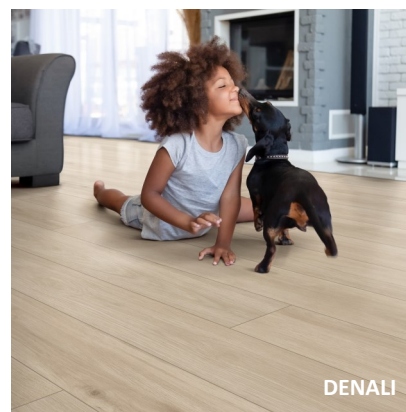
- Kid-Proof
- Earth-Friendly
- Easy to Maintain
- Pet-Friendly
- Quick to Install
- Enhanced Wood Looks

## TRIM MOLDINGS

End Cap 94", Multi-Trim 94", Stairnose 94"

## Park Collection

Our Park Collection celebrates the natural beauty of America's national parks. Durable flooring designed for the modern American family, the Park Collection has a soothing palette of natural wood looks. Perfect for busy homes with pets and kids.



Scan to learn more



AMERICAN MADE



Azalea Lane is exclusively distributed by William M. Bird through its network of flooring retailers.

azalealaneflooring.com

W A T E R P R O O F L V P

# AZALEA LANE

Inspiration in every step.

Specs for **U5000** skus

<b>Dimensions</b>	7.7" x 48"
<b>SQ. FT. / Carton</b>	33.32
<b>Wear Layer</b>	12 mil
<b>Construction</b>	Luxury Vinyl Planks with SPC Rigid Core
<b>Core Thickness</b>	4.0 mm
<b>Underlayment Thickness</b>	1.0 mm XPS Attached Pad
<b>Surface Finish</b>	Overall Embossing with Enhanced Ceramic Bead Finish
<b>Joint Profile</b>	Micro Bevels
<b>Installation Method</b>	Glueless Floating; Uniclic Locking Technology
<b>Installation Level</b>	All Levels
<b>Installation Category</b>	Residential, Multi-Family
<b>IIC Sound Rating</b>	57
<b>Warranties</b>	25 Year Residential

## Park Collection

Our Park Collection celebrates the natural beauty of America's national parks. Durable flooring designed for the modern American family, the Park Collection has a soothing palette of natural wood looks. Perfect for busy homes with pets and kids.



## Features & Benefits

- Kid-Proof
- Earth-Friendly
- Easy to Maintain
- Pet-Friendly
- Quick to Install
- Enhanced Wood Looks

## TRIM MOLDINGS

End Cap 94", Multi-Trim 94", Stairnose 94"



Scan to learn more



Azalea Lane is exclusively distributed by William M. Bird through its network of flooring retailers.

azalealaneflooring.com