

**DRYBACK (GLUEDOWN) LUXURY VINYL
INSTALLATION INSTRUCTIONS**

BEAUFLOR PRODUCT COVERED UNDER INSTALLATION INSTRUCTION

Parkway Dryback (Gluedown) | **Parkway PRO** Dryback (Gluedown) | **Essence** Dryback (Gluedown)

INTRODUCTION

To obtain the best results, we suggest using a professional installer. Improper installation can influence your warranty. It is important to fully understand what is required before installation begins. Beauflor continuously seeks to make technological advances in product design, installation methods and accessories.

NOTICE

Upon receipt, check that the product received is the correct style and color and to the customer's satisfaction. If there are any doubts, do not install the flooring and contact the retailer. Beauflor[®] will not be held responsible for any costs relating to the installation of unsatisfactory or incorrect product. For warranty coverage, product must be installed in accordance with Beauflor installation guidelines using Beauflor installation sundries.

PREPARATION

ACCLIMATION

Acclimation is a required procedure prior to the installation of Luxury Vinyl Flooring (LVF). Store the UNOPENED BOXES in the room where the flooring is to be installed for at least 48 hours prior to installation. Always store the boxes on a flat and level surface; never store the boxes on their sides. Heating and air conditioning should be operational and set between 55 °F - 85 °F (12.8 °C - 29.4 °C) for the acclimation and installation period.

REQUIRED ADHESIVE

Beauflor Ultrabond or Beauflor 4N1 Pressure Sensitive Adhesive

STRICTLY ADHERE TO THE INSTALLATION GUIDANCE LOCATED ON THE PRODUCT INCLUDING PROPER TROWEL

SUGGESTED TOOLS

- Safety Glasses
- Utility knife
- Saw/Guillotine
- Pencil
- T-square / Straight Edge
- Tape measure
- Spacers
- Chalk Line

SITE CONDITIONS / SUBFLOOR PREPARATION

- Room temperature must be maintained between 55 °F and 85 °F during the installation period.
- Substrate should be free of dust, debris from paint, varnish, wax, oils, curing sealers, solvents and other foreign matter.
- Any adhesive residue from prior installations should be completely removed.
- Any looseness of the substrate should be secured.
- High spots should be levelled and low spots should be filled with a proper material to ensure substrate is flat within 3/16" per 10 foot radius

- All construction seams, expansion joints, and holes should be filled level with the surrounding surface to eliminate telegraphing of such irregularities.
- If you plan to remove old resilient flooring material or any type of old adhesive, please be aware that it may contain asbestos fibers or crystalline silica; therefore, avoid creating dust.
 - Inhalation of such dust is a cancer and respiratory tract hazards and local regulations may require professional removal.
 - Instructions for the removal of old flooring materials and adhesives may be found in the RFCI Recommended Work Practices for Removal of Resilient Floor Coverings. You may contact the Resilient Floor Covering Institute at 706-882-3833 or www.rfci.com.
- Use only cement-based patching and leveling compounds.
 - Check with patching and leveling compound manufacturers for curing times.
 - Check moisture levels before starting installation to ensure moisture levels are within guidelines as outlined in the "Concrete Substrates" paragraph.
 - The contractor or owner is responsible for cure time, moisture content testing, and the structural integrity of any leveling or patching compound used.

SUBFLOOR GUIDELINES

Beauflor LVF can be installed over many floors. All carpeting and padding need to be removed. Make sure that the surface is clean, dry, structurally sound and flat within 3/16" per 10 foot radius (4.7 mm per 3 m). Supporting floors must be rigid as too much deflection can result in a failed installation. Maximum deflection should not exceed 3/64" (1.1 mm).

Beauflor LVF should not be installed over plank floors, cushioned-backed vinyl flooring, asphalt-based floors, carpet, self-adhering plank or tile, laminate or other floating flooring or structurally-damaged concrete; concrete should be free from dust, solvents, paint, wax, grease, oil, sealing compounds or curing agents

CONCRETE SUBFLOORS

Concrete subfloors must be inspected prior to installation and if they do not meet the following requirements, do not install flooring. Concrete shall have a minimum compressive strength of 3500 psi. Concrete subfloors must be cured for 60 days prior to installation of the flooring, and should be tested for excessive moisture. Concrete subfloors require moisture testing conducted in accordance with ASTM F1869 Calcium Chloride Test or ASTM F2179 Relative Humidity in Concrete Slabs. Calcium Chloride emissions should not exceed 5 lbs. per 1000 sq. ft. Relative Humidity In-Situ Probes should not exceed 75% RH. Testing should be performed and documented prior to beginning installation.

For concrete substrates with excess moisture results, apply Beauflor Moisture Seal 95 in accordance with instructions.

WOOD SUBFLOORS

Wood subfloors require no more than 14% moisture content when tested with pin type meter and must have a minimum 18" cross ventilated space between the bottom of the joist and ground. Exposed earth crawl spaces must be sealed with a polyethylene moisture barrier. For wood installed directly over concrete (sleeper construction), remove the wood and proceed with concrete subfloor guidelines.

Wood subfloors should be a minimum of 3/4" thick, APA approved grade tongue and groove plywood or 23/32" OSB, with a smooth finish, free from spring and deflection. If the wooden subfloor is not an APA approved flooring grade underlayment, a minimum of 1/4" approved wood underlayment must be adhered to the existing substrate. Make sure that the surface is clean, dry, structurally sound and flat within 3/16" per 10 foot radius. All fastener indentations and joints should be level and smooth using appropriate patching compounds. Deflection should not exceed 3/64".

EXISTING RESILIENT FLOORS

When installing Beauflor LVF over existing resilient flooring, ensure that the existing product is in good condition, that it was installed in the full spread glue method and is properly secured. Beauflor LVF can be installed over one layer of non-cushioned sheet flooring. Existing tile or sheet resilient floorings should be stripped using a product that is an appropriate stripper for vinyl to remove wax or other contamination, rinsed with clear water and allowed to dry.

When installing over an existing resilient flooring material, an embossing leveler may be required to prevent the existing material pattern from telegraphing through the new material.

GYPSUM FLOORS

Beauflor LVF can be installed over flooring grade gypsum subfloors when properly installed following the adhesive installation instructions. It should be noted that gypsum subfloors are very porous and are required to be primed following the adhesive manufacturer's installation instructions. The subfloor should be structurally sound and flat within 3/16" per 10 foot radius (4.7 mm per 3 m).

MARBLE, QUARRY TILE, TERRAZZO, CERAMIC TILE

Properly cleanse substrate using a commercial degreasing/dewaxing solution. Grind or abrade any highly polished or irregular surfaces. Fill any low areas, chips and grout joints that may telegraph through the new flooring. Test for porosity and use the appropriate adhesive application method. Bond tests are required.

RADIANT HEAT FLOORS

Beauflor LVF can be installed over embedded radiant-heated floors provided the operating temperature never exceeds 80 °F (26.7 °C). The radiant system should be in operation for three (3) weeks prior to installation of the flooring. For 48 hours prior to and during installation, the system should be kept at 65 °F (18.3 °C). It should be noted that when using adhesive, flash off time may be decreased due to operation of the radiant heat flooring system. Once the installation is completed, the heat should be gradually increased by a maximum of 5 °F (2.8 °C) per day until the desired setting is reached. Do not use radiant heat systems that expose the flooring to wide variations in temperature, such as a wire induction mat system. The installation area of the flooring shall not contain heated and non-heated areas, unless expansion joints separate them. Keep in mind that loose rugs or carpets may accidentally function as heat insulators and raise the temperature to more than the tolerated maximum surface temperature of 80 °F (26.7 °C).

PRE-INSTALLATION INSPECTION

- Cartons should be stored horizontally at all times.
- Protect carton corners from damage.
- Do not install cabinets or kitchen island on your floating floors.
- Inspect all planks/tiles for visible defects and damage before and during installation.
 - Do not install damaged planks/tiles. Beauflor will not accept responsibility for claims on flooring installed with visible defects.
 - During installation, inspect the groove area and remove any debris that may prevent proper assembly of planks/tiles.
- Ensure that all boxes are of the correct product and when installing, open several boxes at a time and mix planks/tiles from different boxes for best results and overall look.
- Room temperature should be no less than 55 °F for 48 hours before, during and after installation.
- Remove all existing moldings.
- Undercut doorway moldings to the thickness of the flooring.
- Determine in which direction the planks/tiles will be installed. It is recommended that the flooring be installed running parallel to the longest wall.

NOTICE: All commercial installations require approval by a Beauflor sales representative.

INSTALLATION

1. Remove thresholds and baseboards before you measure the room to calculate how much flooring to purchase. Your surface to cover will be the length times the width of the room, plus the area of any nooks and closets. To this total surface, you will need to add 5-10% for trimming. Beauflor recommends to keep a few planks/tiles for replacement should any planks/tiles become damaged.
2. Remove the existing flooring if necessary. If the existing floor surface is solid and smooth, you may choose to skip this step. If you remove carpet or old vinyl, you may need to use a power scraper to remove old adhesive without omitting corners and crevices.
3. Use a patching compound to fill in any cracks and holes in your subfloor. Work the compound into the hole with a putty knife and level it off. Once you have a smooth, even surface, sweep or vacuum the subfloor thoroughly.
4. Planks/tiles are to be installed parallel to the wall that is the main line of sight in the room (usually this is the wall opposite to the room's main entrance). Measure to determine the center of the room and adjust the center point so that planks/tiles are evenly distributed on each side. Mark this straight center line on the floor using a chalk line or fine felt pen. Planks/tiles on first and last rows may need to be cut to ensure even layout throughout the room.
5. Make sure to apply the adhesive only when you are ready to install the planks/tiles, using the proper trowel size and following the adhesive working time as outlined on the adhesive Beauflor installation instructions.
6. Starting from one corner of the room, lay down the first row of planks/tiles moving towards the other wall. Since these planks/tiles do not have any particular direction, they can be installed either from left to right or from right to left.
7. When placing the second row and every subsequent row, make sure to stagger the end joints a minimum of 8" (20 cm) apart from the previous row. Staggering the planks/tiles creates a more authentic appearance. In order to accomplish this, you may need to cut a plank/tile to start a row. Ends that have been cut should be placed against the wall. Use a vinyl plank/tile cutter (recommended) or a utility knife and square to cut the plank/tile at a 90-degree angle to its length. Planks/tiles that are against the wall also need to be a minimum 8" (20 cm) in length. Make sure there are no gaps between the planks/tiles; they should be fitted tight to each other on all four (4) edges. Once the planks/tiles have been installed, use a floor roller to ensure all the planks/tiles are firmly bonded to the floor. Rolling should take place during the working time of the adhesive (see adhesive label).
8. To remove any adhesive residues on the surface of the floor, use a clean white cloth dampened with water if adhesive is wet and acetone, denatured alcohol or mineral spirit if adhesive is dry.

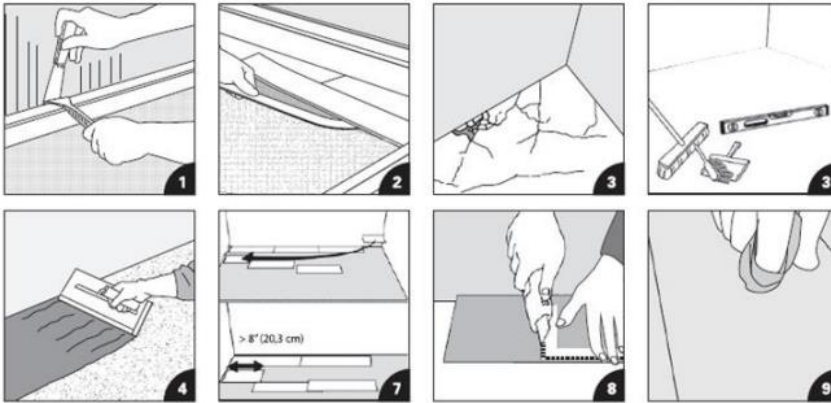
NOTES

1. Beauflor LVF is intended for indoor use only.
2. Beauflor LVF is warranted as a floor covering only.
3. Post-installation temperature should be maintained between 55 °F - 85 °F (12.8 °C - 29.4 °C). Relative humidity should be maintained between 40% and 70%.
4. **Luxury vinyl flooring must be protected from direct sunlight exposure. Beauflor recommends using UV protective film, blinds or curtains in all windows that provide direct sunlight to ensure that the products are not overheated.** Luxury vinyl floor coverings exposed to excessive heat are subject to thermal expansion which may lead to buckling or peaking. Beauflor will not be held liable for any claims or damages arising out of or related to the failure of the installation when the flooring is exposed to direct sunlight.
5. To keep your floor in good condition, it is important to place non-rubber backed doormats at all entrances, to prevent dirt or grit on your floor. Placing doormats will eliminate abrasive particles driven by footwear and will reduce damage. Do not use rubber-backed mats, as long-lasting contact with rubber can cause permanent discoloration. Never place doormats on a wet floor.

6. Rolling office chairs, casters, furniture legs, fitness appliances, etc. should be fitted with soft, non-rubber casters, to avoid permanent damage to your floor. Use a suitable desk mat.
7. You should use felt pads or protective feet for items that contain rubber, such as chair legs, furniture legs, fitness appliances, etc.

Follow the Beauflor Care and Maintenance instructions to properly care for your flooring.

INSTALLATION ILLUSTRATION



HOMEOWNER OBLIGATIONS

To maintain warranty coverage and ensure fast and easy warranty service, the homeowner is responsible for the following:

- Keep five (5) planks/tiles of the product after installation for testing purposes.
- Keep and be able to provide the original sales receipt or documentation illustrating proof of purchase and installation date of the product.
- Make sure the flooring is installed according to Beauflor Installation Instructions.
- Keep a list of cleaners used to maintain the flooring.

BEAUFLOL USA, LLC

This document presents general installation instructions, and is not intended to replace the professional installation expertise of a professional installer. As all installation situations are unique, professional installation is advised.

To ensure the best possible installation, and to ensure the validity of the warranty, these instructions should be followed carefully. Please visit our website at www.beauflor.us for the most up-to-date version of this document, and for additional care and maintenance, and warranty information.