

RIGID CORE LUXURY VINYL PLANK REPLACEMENT INSTALLATION INSTRUCTIONS

INTRODUCTION

These instructions are written as a guide to be used when installing Tarkett Flooring. These instructions, combined with our adhesives and flooring products, create a system. Utilizing this system will ease the installation process and provide the customer with a completed product that will perform to its intended purpose. Always visit www.tarkettna.com for the most current installation and maintenance instructions. Technical videos and tip sheets are also available. Contact Tarkett Technical Services at (800)-899-8916 with any questions.

PLANK REPLACEMENT

These instructions can only be used with: **ProGen Click, NuGen Floating, Vericore Click**

Attic stock, extra planks should always be kept. If a plank becomes damaged, that plank can be replaced. This replacement can be performed without disassembling the entire floor to get to the damaged plank. The following instructions explain the replacement process and should be performed by a professional installer with the recommended tools. Using a straight edge clearly mark the damaged plank at the center approximately one inch from the edge of the adjoining planks.



Recommended Tools:

- Circular Saw
- Straight edge or Square
- Pencil
- Multi Tool or Pry Tool
- Utility knife
- Hand Roller
- PVA Glue (Similar to Elmer's Glue All)
- Ear plugs
- Eye protection
- Cut-proof gloves
- Tarkett S875 Double Sided Seam Tape

1. Using a straight edge clearly mark the damaged plank at the center approximately one inch from the edge of the adjoining planks.



- Using a circular saw, use attic stock to set the blade to the thickness of the plank.



- Carefully, cut the plank along the mark. Take care not to damage the adjacent plank. **CAUTION: wear the appropriate eye protection, respiratory equipment and be certain that the safety guards are in place and operational**



- Carefully remove the center of the damaged plank.



- Using a power drill with a 1/8" bit, drill from each corner back to the inside edge. Space the holes approximately 1/16".



6. Using a sharp chisel or lino knife, cut through the drill holes.



7. Carefully remove the edges of the cut plank. Do not damage adjoining planks.



8. Prepare the replacement plank by removing the tongue and groove on each short side and by removing the groove on the long side.



9. Using Tarkett S 875 Floating Seam Tape, place a piece so it is centered under each adjoining plank. Use a handroller to ensure proper bond.



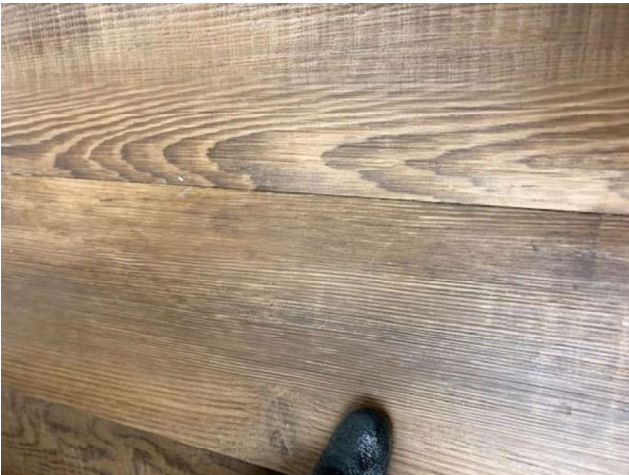
10. Remove the release liner on the tape on all sides.



11. Place a bead of PVA adhesive (similar to Elmer's Glue All) on the top of the tongue of the adjacent plank, long and short side. Wipe off the excess with a damp rag.



12. Position the replacement plank by inserting the tongue of the long side into the groove of the adjoining plank.



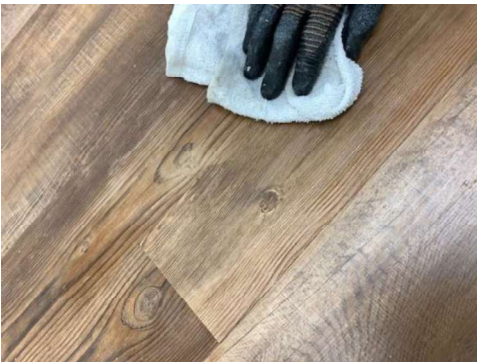
13. Rotate the plank downward into position.



14. Roll seam edges with a hand roller to ensure proper contact with floating seam tape.



15. Wipe off any remaining PVA adhesive with a rag dampened with water.



Your plank replacement is now complete.



Tarkett North America
Technical Services Department
30000 Aurora Road
Solon, OH 44139
800.899.8916 Fax 440.632.5643
info@tarkettna.com
www.tarkettna.com